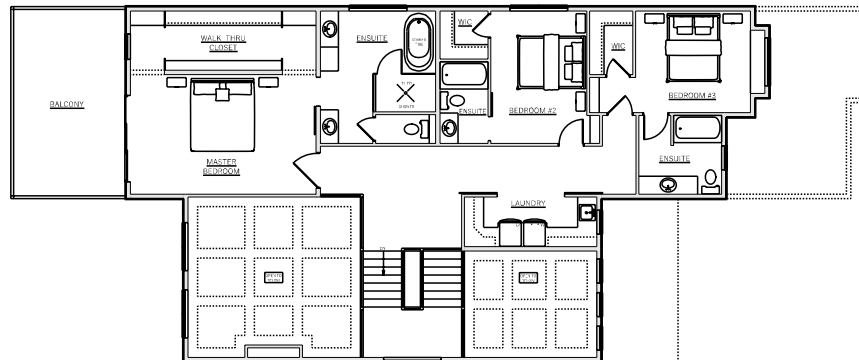
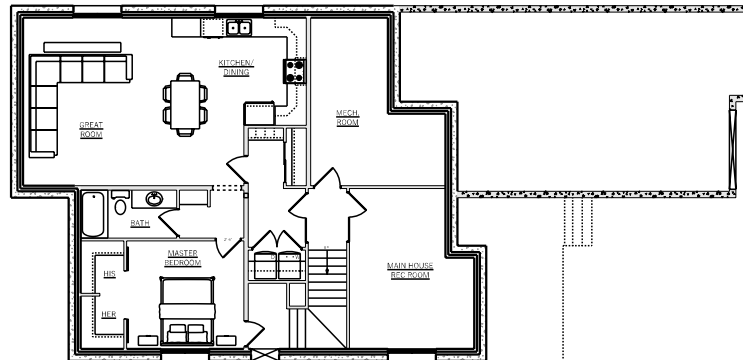


MAIN FLOOR PLAN 8' 1" WALL HEIGHT



SECOND FLOOR PLAN 8' 1" WALL HEIGHT



LEGAL BASEMENT SUITE

DESIGNER



16819 111 Avenue NW.
Edmonton, Alberta, Canada
T5M 2S4

Phone - (587) 772-1721
Email - hello@alighomedesign.ca
Web - www.alighomedesign.ca

**COPYRIGHT 2021 - ALL RIGHTS RESERVED
ALIGN HOME DESIGN LTD.**

THE FOLLOWING DRAWINGS IN ALL PARTS SHALL REMAIN THE INTELLECTUAL PROPERTY OF ALIGN HOME DESIGN LTD. UNLESS PROVIDED IN WRITING BY ALL OWNERS OF ALIGN HOME DESIGN LTD. THESE DRAWINGS ARE NOT PERMITTED FOR USE FOR ANY OTHER PROJECT. THE FOLLOWING DOCUMENTS ARE NOT TO BE REPRODUCED CHANGED OR COPIED IN ANY WAY. THESE DRAWINGS ARE NOT PERMITTED TO BE ASSIGNED TO ANY THIRD PARTY WITHOUT OBTAINING THE WRITTEN PERMISSION OF ALL OWNERS OF ALIGN HOME DESIGN LTD.

Greenzone - 1500 (B) - 3 Bedrooms + Legal Suite ***

MAIN FLOOR PLAN

1,595 Square Feet

SECOND FLOOR PLAN

1,461 Square Feet

BASEMENT DEV. PLAN

1,084 Square Feet + 215 Square Feet